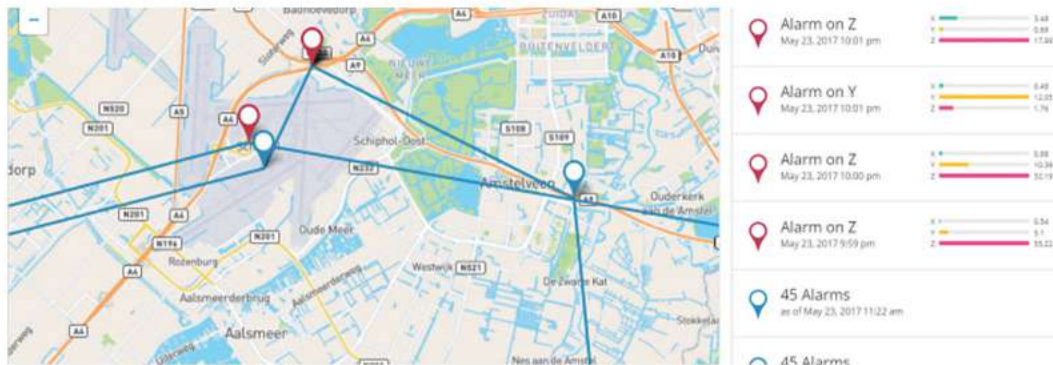


SHOCKLOG® CELLULAR



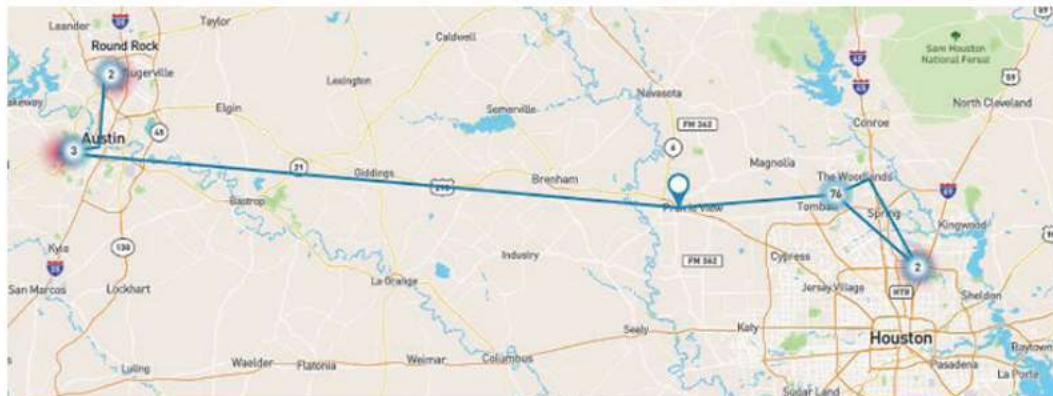
Product Description

With cargo loss exceeding \$50 billion annually, transparency in the supply chain is key to improving your operations. The ShockLog® Cellular enables you to know that your assets are travelling safely to their destination and if something has gone wrong, you know when and where the issue occurred.



The ShockLog® Cellular combines powerful monitoring capabilities of the ShockLog® 298 impact recorder with a cellular communication module to deliver real-time notifications of unacceptable handling in the supply chain.

This device alerts you when your shipment has experienced an out of tolerance impact, temperature, humidity, tilt, or roll condition. The information is accessible via the user-friendly SpotSee Cloud from anywhere in the world.



Industries Served

- Aerospace
- Arts and Media
- Chemicals
- Defense
- Electronics
- Energy and Utilities
- Engineering
- Food and Beverage
- Furniture and Fixtures
- Healthcare
- Logistics and Transport
- Order Fulfilment
- Pharmaceutical
- Retail
- Scientific Research and Instruments



STREAM PEAK INTERNATIONAL PTE LTD
Tel: +65 6610 7921 | Fax: +65 6862 2520
Email: enquiry@streampeak.com.sg

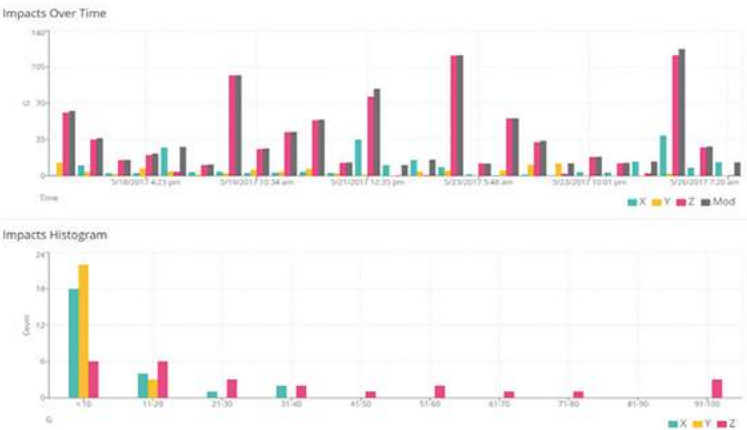
Valuing Relationships, Protecting Goods
Address: 26 Tuas South Street 3, S(638026)
Website: www.streampeak.com.sg

Journey Analysis

SpotSee Cloud Features

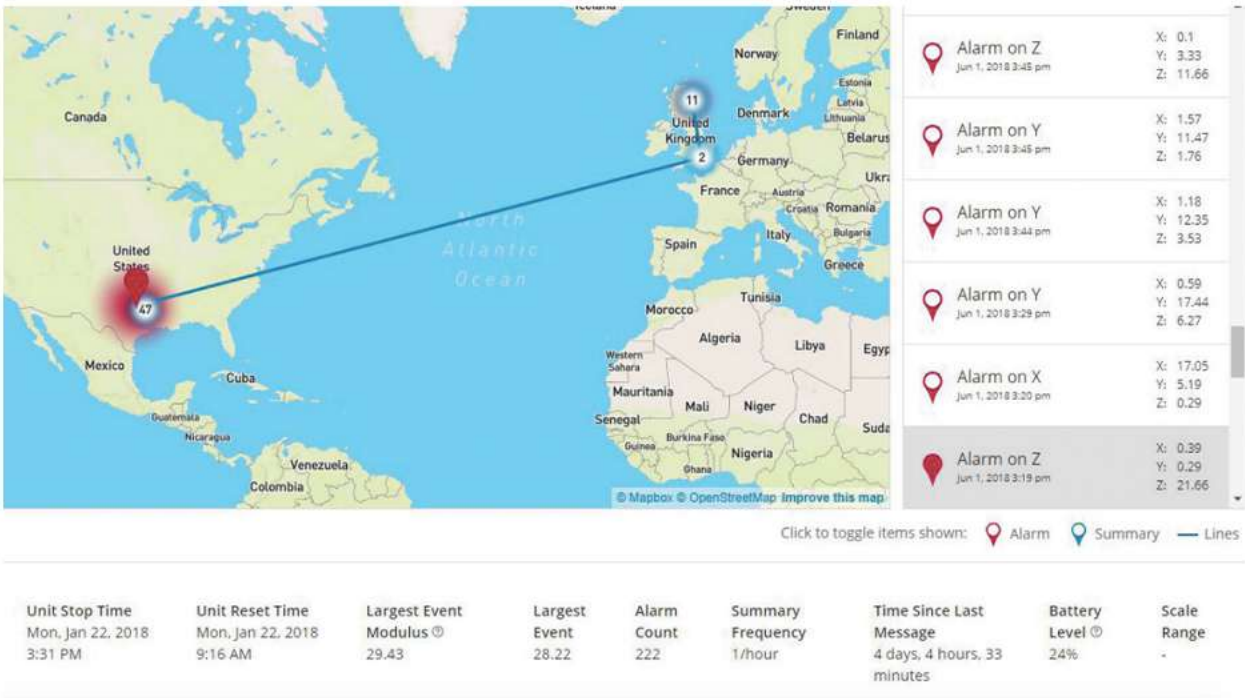
The SpotSee Cloud is where trip data is aggregated in real-time. The graphs are easy to read and include data such as impact with the location, impacts over time, histogram, and temperature.

- Access to your data from anywhere with a secure web portal
- 24/7, Real-time reporting and tracking of incidents
- Alarms with location, time, impact g-level, and direction of impact
- Impacts-over-time visualization for each asset
- Histogram of the total impacts to an asset



ShockLog Analysis Software

At the end of the journey, if alarm conditions need to be further analyzed, the full data set can be downloaded into the ShockLog software for a more detailed view of the recorded data. The ShockLog Report View provides an overview of the entire journey: peak acceleration values for all three axes, detailed impact curves, and temperature. Additional parameters may be evaluated if the ShockLog has been fitted with additional sensors: humidity, pressure, tilt, roll.



Key Features

- Real-time out-of-tolerance condition notifications
- 24/7 Access to trip data from anywhere in the world
- Detailed impact analysis on the ShockLog® software
- Global low-cost connectivity with no roaming fees
- Robust battery life for long journeys
- Real-time notification of out of tolerance handling conditions
- Easy to use cloud-based interface that is accessible anywhere in the world
- Global low-cost connectivity with no roaming charges
- Robust battery life ideal for long journeys
- Connects to any new or existing ShockLog® 298 (Firmware version 30 or greater)



Product Specifications

Technical Specifications	
Weight:	590g (With batteries) 500g (Without batteries)
Size:	7in x 5.35in x 1.375in 178mm x 133.5mm x 35mm
Operating Temperature Range:	- 22°F to 140°F / - 30°C to 85°C
Communications:	Global Cellular (2G/3G) with no roaming charges
Battery:	6 x 1.5V AA lithium batteries
Battery Life:	Up to 75 days (1 summary/hr) Up to 190 days (1 summary/day)
Sealing:	IP67

Related Products



ShockLog® 298



ShockLog Satellite



SpotBot Cellular



OpsWatch



STREAM PEAK INTERNATIONAL PTE LTD
 Tel: +65 6610 7921 | Fax: +65 6862 2520
 Email: enquiry@streampeak.com.sg

Valuing Relationships, Protecting Goods
 Address: 26 Tuas South Street 3, S(638026)
 Website: www.streampeak.com.sg