

# DESICCANT REACTIVATION UNIT



## Product Description

The Series 2 Desiccant Reactivation Unit is a purpose-designed equipment for the recovery of saturated silica gel / Envirogel.

Simplicity and efficient operation are the key features of the Series 2 Desiccant Reactivation Unit with its ability to process up to 25 kilograms of saturated silica gel, removing up to 4.5 litres of water in one six-hour cycle.

The Series 2 Desiccant Reactivation unit is operated from a standard main electricity output to power the three kilo-watt beaters.

A forced air circulation ensures the evaporating moisture is transported from the desiccant. The temperature monitoring and control instruments of the series 2 desiccant reactivation unit are a unique feature and provides precise reactivation management to ensure maximum reactivation efficiency.

The input reactivation temperature control is user settable and includes a constant readout of the input heat energy. An accurate located output temperature monitor indicates the progress of the reactivation process through the desiccant bed. When the output temperature nears the inlet temperature, effective reactivation is complete. The Series 2 Desiccant Reactivation units are mounted on wheeled Castors for easy placement in a workshop or on site. The inner desiccant holder is removable for emptying and loading of the silica gel.

## Industries Served

- Power & Refinery



## Product Specifications

Maximum Silica Gel Capacity:	25 Kg
Electrical Supply:	240 Volts 50 Hz, 3 Kilowatts
Maximum Reactivation Temperature:	105°C
Reactivation Air Flow (typical):	200 Litres/minutes
Elapsed Time Indicator:	Event and total hours run
Colour and Construction:	Grey painted mild steel
Weight:	75 Kg
Dimensions:	1055mm (Height) x 508mm (Depth) x 660mm (Width)



## Related Products



Silica Gel



Adsormat



Mark 7 Transformer Breather



V, W, X, Y & Z' Transformer Breathers



STREAM PEAK INTERNATIONAL PTE LTD  
Tel: +65 6610 7921 | Fax: +65 6862 2520  
Email: [enquiry@streampeak.com.sg](mailto:enquiry@streampeak.com.sg)

*Valuing Relationships, Protecting Goods*  
Address: 26 Tuas South Street 3, S(638026)  
Website: [www.streampeak.com.sg](http://www.streampeak.com.sg)

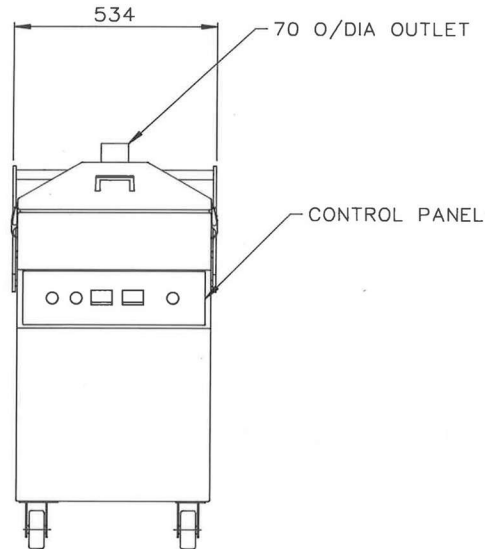
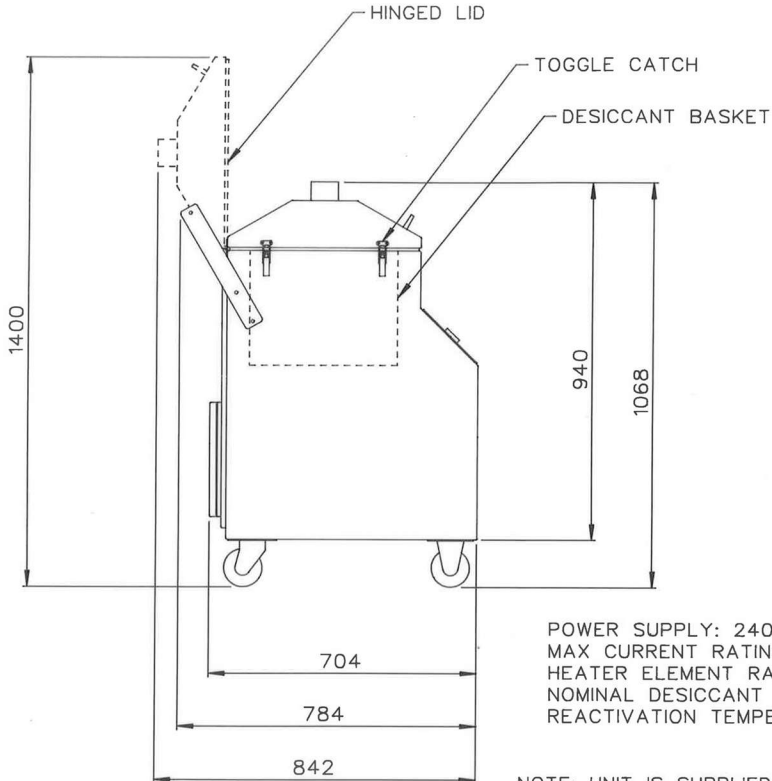
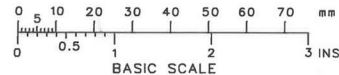
THIS DESIGN IS THE PROPERTY OF BROWNELL LTD  
AND MAY NOT BE COPIED OR REPRODUCED  
WITHOUT THEIR PRIOR WRITTEN PERMISSION

DRG No  
BL/E 1005/04 INST  
USED ON

THIRD ANGLE PROJECTION

REMOVE ALL SHARP EDGES UNLESS SPECIFIED

DO NOT SCALE - ASK



POWER SUPPLY: 240Vac 50-60Hz  
MAX CURRENT RATING: 15A  
HEATER ELEMENT RATING: 3kW  
NOMINAL DESICCANT CAPACITY: 25kg  
REACTIVATION TEMPERATURE: 120 °C

NOTE: UNIT IS SUPPLIED WITH A 5 METRE  
OUTLET HOSE & 2 HOSE CLAMPS.

		A	12/10/00
CHANGE	MOD No	ISSUE	DATE

MATERIAL MILD STEEL	PROTECTIVE FINISH PAINTED	TOLERANCES UNLESS STATED	±10	BROWNELL LIMITED LONDON NW10	CUSTOMER REF.	DRAWN LJ	CHECKED IS
		DIMNS IN <del>mm</del> /mm					
EST. WT. —		SCALE (ORIGINAL) 1 : 10					